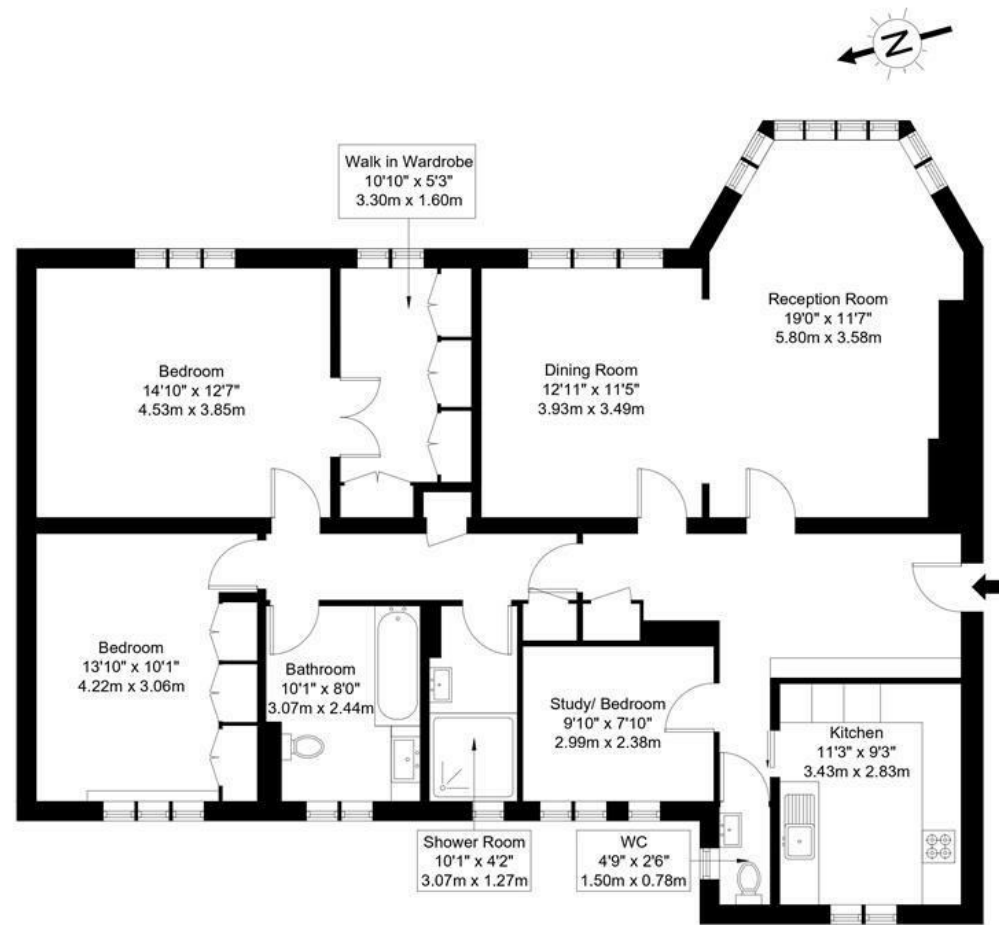


Bede House, SW15 3LT

Approx Gross Internal Area = 129.10 sq m / 1389 sq ft



Second Floor

Ref :

Copyright

**BLEU
PLAN**

The Floor plan is not to scale and measurements and areas shown are approximate and therefore should be used for illustrative purposes only. The plan has been prepared in accordance with the RICS code of Measuring Practice and whilst we have confidence in the information produced it must not be relied on. If there is any aspect of particular importance, you should carry out or commission your own inspection of the property.

Copyright @ BLEUPLAN

DISCLAIMER•These particulars are intended to give a fair and substantially correct overall description for the guidance of intending purchasers and do not constitute an offer or part of a contract. Prospective purchasers and/or lessees ought to seek their own professional advice.

•All descriptions, dimensions, areas, references to condition and necessary permissions for use and occupation and other details are given in good faith and are believed to be correct, but any intending purchasers should not rely on them as statements or representations of fact, but must satisfy themselves by inspection or otherwise as to the correctness of each of them.
•All measurements are approximate.



Bede House, Putney Hill, SW15

A superb second floor apartment set within Putney most prestigious 1930's built mansion block development. Originally laid out as a four bedroom property totalling 1389 sqft, the apartment has been remodelled creating instead a very generous two/three bedroom home with fantastic reception space. Residents of Manor Fields benefit from eleven acres of beautifully cultivated and landscaped communal grounds, off street parking, portorage and 24 hour security. Set back from Putney Hill, Manor Fields offers easy access to the varied amenities of Putney High Street and its excellent rail and road transport links into Central London. The property also includes a storage room and private garage . There is a lift and the property is chain free.



- 1389 SQFT
- TWO BEDROOMS PLUS DRESSING ROOM
- MODERN FITTED KITCHEN
- CLOAKROOM
- STORAGE ROOM
- DOUBLE RECEPTION ROOM
- STUDY/BEDROOM THREE
- TWO BATHROOMS
- GARAGE
- SHARE OF FREEHOLD

Guide Price
£895,000

Under Offer (SSTC)

